



# The Good News

March 2011



Daylight  
Savings Time  
is near!!  
Remember  
to  
SPRING  
FORWARD  
SUNDAY  
MARCH 13TH



## Wanted For "The Wesley Experience" Surrendering to the Spirit

People who for one month will:

- Meet once a week to pray together
- Give two hours time each week to God
- Give God one tenth of their earnings
- Spend from 5:30 to 6:00 each morning in prayer and meditation
- Witness for God their experience to others

Before going into the ministry, I participated in this experience in our home church in Memphis, TN. It was truly transformational, not only for myself but for the entire church. How do we learn to put God first in our lives and thus experience the "peace that God gives, not this world gives." For we who have tried this Wesley Experience can say to you with love and deep compassion: Try this experience and your life will never be the same again. The purpose is to help you put God first in your life.

### A Word of Caution

This experience is not for everybody. It is a course of action which no person should embark upon until he or she understands the fundamentals of the program:

Once you put God first in your life, you will never be the same again.  
*Are you ready for this?*

Putting God first in your life during this day and age will require great self-discipline, self-control, and self-surrender.  
*Are you ready for this?*

Once your life has changed, you will never again want to go back to your old way of living.  
*Are you ready for this?*

This Experience will be during the time of Lent. Are you ready for this?

### In this Issue

Children	2
Youth	3
Education	4-5
Missions	6
Worship	7
Fellowship	8
New Members	9
Book Nook	11



## NEW STAFF MEMBER

Janet Walton is our new church secretary. Although she has never worked in a church before, Janet brings some excellent experience with her – mostly working with people.

She taught for several years in many different venues. She was the director of Enid Community Learning Center and worked with inmates of the OK Department of Corrections, at-risk junior high and high school students, and school drop-outs who wanted to continue their education in a less intimidating environment. Every day was a challenge because most came from an atmosphere where education was not a priority. It was always a joy to watch as many succeeded for the first time in an educational setting.



Janet and her husband Ron have been married for almost 40 years and have four children, 3 sons and a daughter. They also have sixteen grandchildren and four great-grandchildren. Their youngest son almost drowned when he was two years old and has had many challenges in his life overcoming his handicaps. One of his major accomplishments was obtaining his Associates degree. It was a success story not only for him, but the entire family.

Her sunny disposition and propensity to help others, which she credits to her mother's influence, will be an asset in the church office. Be sure to stop and welcome Janet.

## CHILDREN'S MINISTRY

Last year we sent a care package to troops in Iraq. This year we will be sending a care package and cards to children in the oncology ward at Arkansas Children's Hospital in Little Rock. Some of them are there for a short time, some are there for what seems like an eternity. Over the next month we will be collecting toys to make them smile! Below is a list of items that ACH would LOVE!!!

### Infant/Toddler Items

Star Stacking Toys	Pop-Up toys
See-n-Says	Rattles
Board Books	

### School Age Items

Hand Held electronic games	I Spy books
Children's flashlights	Crayola Crayons
Card games (Uno, Go Fish, Old Maid, etc)	Yo-Yos

### Teen Items

Sports Bottles	Magnetic Dart Boards
Wallets	Journals
Ear buds	MP3 Players
i-tunes gift cards	models

### Other Items

Disposable Cameras	Batteries
Portable Radios	phone calling Cards
WalMart Gift Cards \$10.00	Ear Plugs

Please ~ Due to infection control policies, ACH can not accept used items.

There are collection boxes in Becker Hall and in front of my office downstairs.

Thank you!  
Carrie Drish  
Director of Children's Ministry

## FINANCE CORNER

Month-to-date (as of 1/31/11)	Budgeted Expenses.....	\$51,642.50
Month-to-date (as of 1/31/11)	Receipts.....	\$43,442.40
Year-to-date	Budgeted Expenses.....	\$51,642.50
Year-to-date	Receipts.....	\$43,442.40



*Help keep our church electricity costs down by remembering if you turn UP the thermostat, turn it back DOWN when you are done!*



## CROSSWORDS YOUTH

We have had a very snowy February and I hope, like many of you, that the snow is behind us and spring is just around the corner for us in March.

CrossWord youth had to postpone their Souper Bowl of Caring collection to February 13 and even with having the 8:00 a.m. service cancelled, they collected more than last year for a total of \$466. Thank you to all who contributed to this wonderful hunger fight. We plan on sending the money to five charities this year - Helping Hands food pantry, The Children's Shelter kitchen, Youth Bridge kitchen, Caring and Sharing food pantry, and a local food pantry here in Bella Vista.

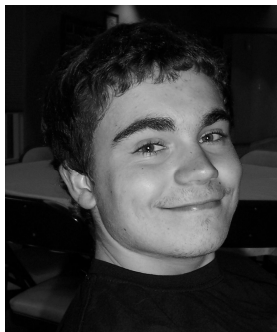
On February 19, we are hosting the youth from FUMC of Rogers for a 'Back in the Day' event. We will meet at the driving range and then off to Papa Mikes to eat and finish off here in Becker Hall. The kids were given an interview sheet so many of you may have been interviewed about what life was like when you were a teenager. They will be sharing that information to learn the differences then and now, plus look at the similarities that haven't changed thru the decades.

On March 5, the youth will hold their first prayer breakfast. We will have three per year. This one is titled 'Pajamas, Pancakes, Prayers, Pals, and Passion'. They are to come in their pajamas, eat pancakes, bring a friend, pray together, and watch 'The Passion of Christ'.

On Saturday, April 9, CrossWord youth ministry will be co-hosting with the Children's ministry a Spaghetti Dinner and Silent Auction and our portion of the profits will be used as our spring mission trip fundraiser. Please keep that date on your calendar to come for a great plate of spaghetti, salad, and bread. You may also find something to bid on in the silent auction. Tickets will go on sale at a table in the Narthex or Becker Hall on March 13. Tickets will be available on Sunday mornings or any other day of the week thru a youth, parent, or child from our church. Please tell your neighbors, friends, and relatives to come also.

In Sunday school, we have begun the six week series titled 'Three Simple Rules 24/7 for Youth' studying John Wesley's three rules. On Wednesday nights, we are using the Nooma DVD series curriculum. We are also working on portions of our Youth Sunday program already. Karina Kelly is working on a liturgical dance with eight youth. We will need to purchase some costume items for their performance. Please see her for a list of material or items that you could donate. Please see myself if you would like to make a small monetary donation to help. Thanks for all your support and prayers for the youth.

In Christ,  
Danette



**Congratulations to Kolby Williams**  
for being selected as  
First Chair Viola  
for the Arkansas High School  
All State Orchestra!



## EDUCATION

### LIFE

#### Living in Faith Everyday! 2011 Spring Classes

##### "Lenten Services"

Each Wednesday in Lent, beginning Mar 9 through April 20. from 8:00am till 9:00am.

Begin the morning at 8am with a worship service of praise, music, prayer and a message delivered by a guest speaker. Immediately following, come to Becker Hall for a time of fellowship and breakfast snacks.

Those who wish, may return to the sanctuary for a time of personal reflection and prayer, or join one of the study groups that meet on Wednesday mornings.

##### "Walk to Emmaus" An Introduction and an Invitation.

Sunday, May 1, 4–6pm.

Facilitator - Reverend Cathy Luck and others

Please come and meet others who have been on the Walk to Emmaus. Let them share what the "Walk" has meant to them. Let them tell you how it may have changed their lives. Ask Questions. Enjoy the fellowship and snacks. And get information about the "Fall Walks" for 2011.

##### Community of Hope—Volunteer Pastoral Caregiving for the Laity

Tuesday's 4 weeks, 2–3:30pm.

March 15, 22, 29, Apr 5.

Facilitator—Jan Lowe

Hear about a Pastoral Caregiver program that has some of the elements of the Stephen Ministry program, but also leads volunteers into the community as well.

**Week One**—Overview of Program and decide if we should offer it at FUMC. Q&A

**Week Two**— Consider leadership, trainers, and timeline if we decide to proceed.

**Week Three**—Develop communication plan for volunteer participant interest.

**Week Four**—Fill leadership roles; commit to at least weekly prayer for this new ministry during the first year.

**Who Should Attend?** Those who are willing to help make decisions about adding this ministry at FUMC; those who might be interested in taking on a leadership role; those who just want to know more about the program; those who may want to become a Volunteer Caregiver.

##### "Breaking Free—Total Surrender" by Beth Moore

A Book Discussion Group

Sundays, 8–10 weeks, 4-5:30pm

Beginning Mar 6—Introductory class

Facilitator - Shared leadership

Do you want to know God and really believe Him? Do you want to find satisfaction in God, experience His peace, and enjoy His presence? Do you want to make the freedom Christ promised a reality in your daily life? Learn how to remove the obstacles that hinder freedom by identifying spiritual strongholds in your life and overcoming them through the truth of God's Word—truth that will set you free.



## EDUCATION

### Youth Fellowship - (on-going)

Wednesdays, 7-8pm Fellowship and Spiritual Growth

Facilitator - Danette Baker

Every week, youth come together to engage in fellowship and discussion on a variety of topics. Guest leaders will assist.

### Intermediate Bible Study

Wednesday—on-going, 8:30 to 9:30 am

Facilitator - Juanita Dittmer

This on-going weekly study presents stimulating lessons that explore the biblical message and how to apply it to daily life. Adults move from a focus on the Word to reflection on personal, family, church, and community concerns. Please join this group.

### S.A.L.T. (Single Adults Learning Together)

Wednesday - 1st and 3rd - ongoing, 7—8:30 pm

Facilitator: Peggy Gamble

This on-going twice-monthly group is studying various books of the Old Testament at this time. A facilitator leads group members in choosing and discussing Bible Studies, books, or other materials.

### Disciple Bible Study

Weekly, 34 or 32 weeks, from 9 to 11:30 am

Facilitator: Alan Packard

Three classes of Disciple Bible Study are under way, schedule to end in May 2011. Classes will be offered again in the Fall. This study requires reading large portions of Scripture each week and is based on careful study and preparation. During the course of 34 weeks, groups will move through the biblical stories of Creation to the New Jerusalem.

## WOW WEDNESDAYS!...

Pastor Lee Myane will lead several of the Wednesday Night programs as he tries to answer the question "What Do Methodists Believe."

Each class can stand alone, so choose the ones that will help you in your faith journey and call the office to schedule your attendance.

Mar 2. The Way of Salvation

Mar 9. Ash Wednesday Service

Mar 16. The Sacraments of Baptism and Holy Communion.

Mar 23. TBA

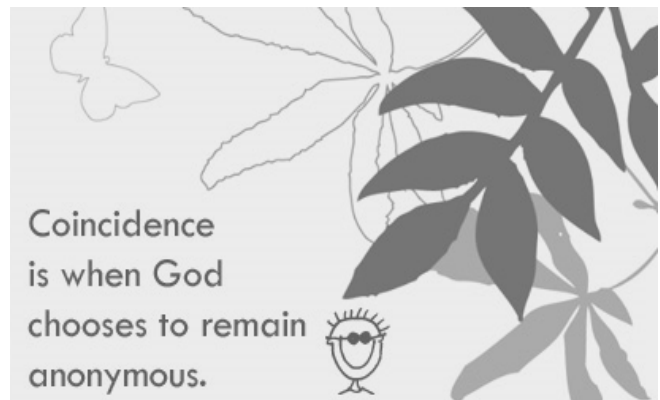
Mar 30. Three Simple Rules

Apr 6. Riordan Hall - Happenings—Connie Willoughby, Director

Apr 13. The Books of Methodism

Apr 27. No class.

May 4. The Liturgical Year and the Order of Worship.





## MISSIONS

### SHOEBOX MINISTRY

#### VOLUNTEERS

We are in the process of mailing out information sheets to all of the new volunteers for 2011. When completed please return to the gold box on the top of the shoebox cabinet in Becker Hall. Place inside and we will add your information so that we can call you to volunteer. For those who have volunteered for this year as well as in the past, we will use your last information sheet. If you have had changes such as days you can volunteer or phone number or address change, please pick up a new sheet UNDER the gold shoe box and return it to the gold box when completed. We are so excited to be starting our volunteer program now that the snow and winter cold is gone.



#### HELP WANTED

We are looking for a volunteer who would be willing to put our files and lists on computer discs so that we can update ourselves. You can work at home and Shoebox can supply all of the items needed such as ink, paper and whatever else is needed. We need your help badly! Call Diane Cox at 855-2836 or cell, 925-0988.

#### DELIVERIES

We delivered 263 shoe boxes in January. Deliveries for February due to the weather will not be started until after this newsletter information is due. We will report next month.

#### BLESSINGS

Thank you to the Martha Circle for packing Sunshine Sacks to be taken to Cooper Elementary School. God Bless you!

As always in His Service,  
The Shoebox Ministry Team

### PAK-A-SAK

Our collection of food in March will go to the Salvation Army in Bentonville. This is a homeless shelter for men, women, and families. They are in need of all types of food, especially canned fruit, juice, cereal coffee, peanut butter, and vegetables. Your generosity to all the agencies we serve in our area is very much appreciated.



### THANK YOU!

A big thank you to the "crew" that worked at Helping Hands on January 22. It was a chilly morning for those working the back dock but your presence there and those who worked inside helped the Store operate smoothly. June 11 is our next scheduled Saturday to help.

### MISSION OF THE MONTH THE WESELY FOUNDATION

Wesley at the University of Arkansas has a long legacy and established tradition of ministry with students on the UA campus. In 1924, through the vision of Central Methodist Church, it became the first Wesley Foundation established in the Methodist Episcopal Church, South (today's United Methodist Church).

Today we prayerfully continue that legacy of excellence. Although affiliated with the United Methodist Church, the community of the Wesley Foundation is made up of students representing all denominational backgrounds, as well as those who have no church affiliation.

Remaining faithful to our past, our present, and our future, we seek to be led by the Holy Spirit as we remain focused on who we are called to be and on what we are called to do.

**Join us Sunday, March 13 to hear Rev. Omas Al-Rikabi speak at all three services on the work of the Wesley Foundation!**



## WORSHIP

### Lenten Opportunities for Worship

## Ash Wednesday Evening Service

In the Sanctuary at 6:30 p.m.

### “Forgiveness”

### UMW – A Call to Prayer and Self-Denial

### Imposition of Ashes

## Ash Wednesday Morning Services

March 9, through April 20, 2011

## “Out of the Darkness and into the Light”

Make this Lenten season a time of solemn prayer and personal reflection. Choose one or more of the

Each Wednesday in Lent

8:00 a.m. – Worship Service

8:30 a.m. – Continental Breakfast in Becker Hall

9:00 – 10:30 a.m. “The Wesley Experience” – experience the Spirit of God as you are obedient to the principles in this little booklet. For 4 weeks following the introduction on March 9.

Other class times are available as well.

Mar 9 Ash Wednesday	2 Cor 5:20-6:10	The Ministry of Reconciliation
Mar 16	John 14:5-14	Life Through Christ
Mar 23	Rom 4:1-5	Abraham Justified by Faith
Mar 30	Rom 5:1-11	Peace & Joy
Apr 6	Eph 5:8-14	Children of the Light
Apr 13	Rom 8:6-11	Life Through the Spirit
Apr 20	Phil 2:5-11	Imitating Christ’s Humility

**Maundy Thursday and Good Friday Services will be held in the Sanctuary at 7:00 p.m.**



## FELLOWSHIP

### UNITED METHODIST WOMEN

Thank you for all the help we received in putting together such a successful Mid-Winter Dinner and concert, featuring the Mercy River Boys. We couldn't have done it without you! Thank you, also, to the congregation for your support of this program which will allow us to reach so many in need in our community.

#### BAZAAR NOTES

Bazaar workshops begin on Thursday, March 3, 10:00 a.m. to 2:00 p.m. in the Quilt Room. Bring a sack lunch to enjoy during our break at noon.

On March 25 at 10:00 a.m. in the chapel, there will be a meeting of Bazaar Booth chairwomen and anyone else interested in sharing their talents and ideas for this year's Bazaar. Please bring your ideas that would benefit in the set-up, arrangement, etc. Karen Roenfeld and Verna Bottjen are the Co-Chairs.

#### QUARTERLY LUNCHEON

The quarterly luncheon will be held on Wednesday, March 23 at 12:00 noon. Our program will be a book review by Barbara Hostetler. Homemade Soup, salad, and dessert will be served. Cost for the luncheon will be \$7.00. Reservation deadline is March 17. Anyone wishing to attend should make reservations thru your circle, or call Sue Nebrig at 855-9269

### UNITED METHODIST MEN

It isn't "Groundhog Day" or déjà vu but our March 9 Methodist Men's Dinner will be much the same as the one we couldn't have in February. Barring another snow storm we will have Papa Mike providing stuffed chicken breast with vegetables, dessert and drinks. Our speaker will be Candice Rich from the Alzheimer's Association.

We plan to have Pancake Breakfast tickets available and make sure everyone is aware the spring breakfast is on **Saturday, May 14**. The Phone Tree reservation calls will be made March 2 or March 3. We encourage you to attend the dinner and get tickets so we don't have to mail out so many. If any of you have suggestions for future programs, please call Stan Tague (619-7220).

As everyone knows, bad weather caused the Super Bowl Pizza Party to be canceled. However, the UMM has decided to host a Masters Final Round Pizza Party. The final round of the Masters Golf Tournament will be shown on Becker Hall's big screen, so bring your portable comfortable chair. Everyone is invited to Becker Hall on Sunday, April 10th between 1:00 and 6:00 p.m.. Pizza and soda will be served as long as it lasts, on a first-come-first-served basis. Join us in the fun and fellowship.

### METFIELD METHODIST SG

The Metfield Methodist Shepherd Group has three events coming up. On Monday, March 7, we will meet at 6:00 p.m. at the Bella Vista Dairy Queen to eat together and to talk about plans for the year. All you have to do is show up. Please bring \$5 per person to replenish our treasury. On Saturday, April 16, we will go to the Art in the Park event at the George Washington Carver National Park and have a picnic lunch. The event is from 10-3. Watch for more details next month. On Saturday, May 14, we plan to attend an afternoon event at Hobbs State Park -- possibly a boat ride on the lake. If you have any questions or suggestions for the group, please contact either Cheryl Campbell or Jean Justice.

Trent Humphrey's First Birthday Bash - Potluck and "Stuff the Piggy Bank" Party  
Sunday, March 6 12:00 noon Becker Hall

Join us in celebrating "the little red-head's" first year with us at FUMCBV.  
Bring a dish to share and your place setting - cake and ice cream provided.

Hosted by Marion Korn and Trudy Baird.

Gifts are not necessary - just a little something to add to the piggy bank!





## WELCOME NEW MEMBERS



**Peggy DeWitt** comes to us from a small church home just up the road, in Jane, MO. She was a member of LifeSpring UMC before it recently disbanded. Peggy is retired from the Wal-Mart home office, where she was an administrative assistant in the toy department. She was a member of a military family when she was growing up, and did not live in one place for very long. She now calls Bella Vista home, and lives in the house her husband built eleven years ago. He died two years ago. Peggy has two daughters who live in Florida, three step-sons who live in Gravette, and a step-daughter in Rogers. She keeps very busy volunteering at "Crosslines" in Anderson (a thrift shop and food pantry) and also mentors a boy in Bentonville. In her spare time she likes to sew, read, and square dance. Because she came from a small church, she feels slightly intimidated by our large congregation, but has jumped right in and is becoming a very active member. She also says she loves her Sunday "Sara hug", which helps her make it through the week.



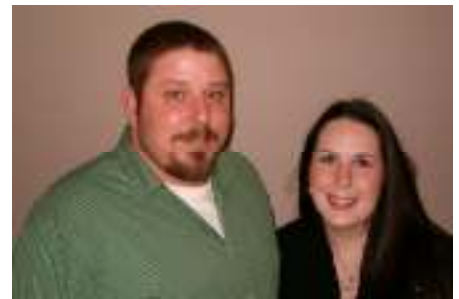
The **Koehler-Wamock-Pace** household is a busy place with four of our new members coming and going. **Kay Koehler** is the matriarch of the family. Also living in the home are her two sons, Joe Pace and John Wamock. John's wife, Rebekka Wamock completes the family.

Kay moved here from Ft. Smith in March of 2009 and is a Waiver Director, running a home for special needs individuals through BOST and Pathfinder.

When she is not burning the candle at both ends, she enjoys reading and cooking.

**John and Rebekka Wamock** were married in 2006 and moved here in March of 2010. He also works for BOST in the

waiver department, working with those with special needs. He loves watching sports and is a fisherman.



Rebekka has a young daughter named Georgia, who is gifted and talented, and lives with Rebekka's mother in Mississippi. She reads and likes to crochet and needlepoint. When the family joined our church a couple weeks ago, Rebekka was baptized and John renewed his vows of baptism with her.



**Joe Pace** is a warm-hearted, sincere individual who is so happy to have found a church home in FUMC. Because Joe is a special-needs individual, he is blessed to have his family so involved. Joe is the artist of the family and loves to paint. He shared one of his paintings of the Cross when he

joined the church a couple weeks ago. Joe and his family are very impressed with the Bella Vista area and are glad to be here.



## MARCH 2011 CALENDAR

**Please check this page for non-routine meeting and activities. Check the bulletin and the website for a complete list of meetings and activities. ([www.lovelearnlead.com](http://www.lovelearnlead.com))**

- |    |  |    |   |
|----|--|----|---|
| 3  | Bazaar Workshops – 9:00 a.m. in the Quilt Room (every Thursday, same time) | 15 | Naomi Circle - 1:30 p.m. in the Chapel                |
| 5  | Youth Prayer Breakfast   | 16 | S.A.L.T. - 7:00 p.m. in Room 5                        |
| 6  | Blood pressure check - 9:00 a.m. in the Chapel                             | 17 | Evening Circle – 6:30 p.m. in the Chapel              |
| 6  | Fitch Birthday party, noon in Becker Hall                                  | 19 | Angel Food Distribution – 8:30 a.m.- Becker H         |
| 8  | Charity Circle - 9:00 a.m. in the Chapel                                   | 20 | Pak-a-Sak Sunday - Narthex                            |
| 8  | Sarah Circle - 1:00 p.m. in the Chapel                                     | 20 | Pizza with the Pastor – 4:00 p.m. – Chapel            |
| 8  | Agape Shepherd Group - 5:30 in the Chapel                                  | 21 | Library Board -10:00 a.m. in the Library              |
| 9  | Mission Meeting - 9:30 a.m. in Room 23                                     | 21 | Church Council – 6:30 p.m. in the Chapel              |
| 9  | Worship Committee - 1:30 p.m. in Room 6                                    | 23 | UMW General Meeting/Luncheon – 12:p.m. , Becker Hall. |
| 9  | UMM Executive Meeting - 5:30p.m. in Room 6                                 | 25 | Bazaar Chairpersons' Mtng–10:00a.m.- Chapel           |
| 9  | UMM Dinner – 6:30 p.m. in Becker Hall.                                     | 28 | Alzheimer's Support – 9:00 a.m. in Room               |
| 9  | Youth Liturgical – 6:00 p.m. in the Sanctuary                              |    |   |
| 10 | Hope Circle - 1:00 a.m. in the Chapel                                      |    |   |
| 11 | Pre-School Board Meeting - 11:30 a.m. in Room 6                            |    |   |
| 12 | AAUW Style Show - 8:00 a.m. in Becker Hall                                 |    |   |
| 13 | Rev. Omar Al-Rikabi (Wesley) preaching at all three services               |    |   |
| 13 | UMKC String Quartet Concert - 3:30 p.m. in the Sanctuary                   |    |   |
| 13 | Confirmation Class – 5:30 in room 23 (every Sunday, same time)             |    |   |
| 14 | Alzheimer's Support Grp - 9:00 a.m. - Room 6                               |    |   |
| 14 | Abrams Shepherd Group – 5:30 p.m. Becker Hall                              |    |   |

### **CHURCH LIBRARY VOLUNTEERS**

**IF YOU ARE A MEMBER OF THE CHURCH LIBRARY BOARD, PLEASE STOP IN THE LIBRARY TO SIGN UP TO WORK IN THE LIBRARY ON SUNDAY MORNINGS. THE CALENDAR IS ON THE DESK.**



## BOOK NOOK

### **LARGE PRINT FICTION:**

- A DISTANT MELODY by Sarah Sundin (Donation)  
 AN IRISH COUNTRY COURTSHIP by Patrick Taylor (Donation)  
 LOVE FINDS YOU IN SNOWBALL, ARKANSAS by Sandra D. Bricker (Donation)  
 THE SECRET BETWEEN US by Barbara Delinsky (Donation)  
 READER'S DIGEST SELECT EDITIONS  
 BOOK 1: LOST AND FOUND by Jacqueline Sheehan (Donation)  
 BOOK 2: LA'S ORCHESTRA SAVES THE WORLD by Alexander McCall Smith (Donation)  
 READER'S DIGEST SELECT EDITIONS  
 BOOK 1: A THREAD SO THIN by Marie Bostwick (Donation)  
 BOOK 2: THE ART OF RACING IN THE RAIN by Garth Stein (Donation)  
 ON HER DOOR STEP by Kay Hooper (Donation)

### **NON-FICTION:**

- EXPERIMENTAL WORSHIP by Bob Rognlien (Donation) (264)  
 THE DOWRY OF MISS LYDIA CLARK by Lawana Blackwell (Donation) (813)  
 CHICKEN SOUP FOR THE MOTHER'S SOUL by Jack Canfield (Donation) (810.8)  
 CHICKEN SOUP FOR THE COUPLE'S SOUL by Jack Canfield (Donation) (306.7)

### **FICTION:**

- THE MULBERRY TREE by Jude Deveraux  
 ALBERTA BRIDES by Linda Ford  
 MEASURE OF RAITH by Patricia Rushford  
 Book 8 of "The Stories from Hope Haven" series.

### **NON-FICTION:**

- BACKCAST by Lou Ureneck (306.89)

### **UMW READING PROGRAM:**

- THE WOLF SHALL DEWLL WITH THE LAMB by Eric Law (Cat. III)

## THANK YOU

Dear Friends,  
 Thank you for your prayers, telephone calls, and cards. They have all helped in my recovery in these past three months. I am feeling better and looking forward to being active again soon.

Sincerely,  
*Larry R. Williams*

Thank you to all the church members who so thoughtfully called to check on me during my recent surgery. Thanks to God for His healing hand. Juanita and I deeply appreciate each of our church friends and their kindness. I hope to be back in church again very soon.

*Carroll Prior*

Thank you to all who called, sent cards or visited during my recent surgery. What a great church family we have! Bless you all—

*Barbara Jenner*

### **CHURCH LIBRARY PAINTINGS**

IF YOU HAVE A PAINTING/PICTURE WHICH YOU WOULD LIKE TO DISPLAY IN OUR LIBRARY, PLEASE CALL DIANE VERVILLE, CHAIRMAN, AT 876-1676. THERE ARE SEVERAL ON DISPLAY AT THE CURRENT TIME.

**First United Methodist Church Of Bella Vista  
20 Boyce Drive, Bella Vista, AR 72715**

**NON PROFIT ORGANIZATION  
U.S. POSTAGE PAID  
PERMIT NO. 176  
BENTONVILLE, AR 72712**



## ***We're Here to Serve You***

Senior Pastor - Rev. Sara Bainbridge  
Associate Pastor - Rev. Verle Shoemaker  
Associate Pastor - Rev. Lee Myane  
Dir. of Lay Ministries - Jan Lowe  
Director of Children's Ministry - Carrie Drish  
Director of Youth Ministry - Danette Baker  
Dir. of Music Ministries - Dr. Lawrence Zehring  
Director of Media Ministries - Troy Jorgensen  
Handbell Director - Dawn Thompson  
Organist/Pianist - Roiselle Grim  
Praise Team Leader - Shannon Wicker  
Worship Leader - Garrett Greer  
Financial Secretary - Marge Smith  
Treasurer - Amy Gilmore  
Secretary - Janet Walton

**Phone: (479) 855-1158**

**Fax: (479) 855-0850**

**[www.LoveLearnLead.com](http://www.LoveLearnLead.com)**

**Newsletter Deadline: 15th of the month**

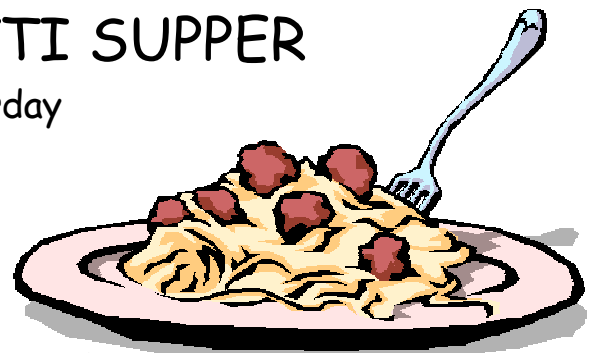
FORWARDING ADDRESS REQUESTED

***To the Home of ...***

## **SPRING SPAGHETTI SUPPER**

APRIL 9—Saturday  
4—6 p.m.

**Spaghetti, Salad, Bread, Dessert**



Tickets are **\$5** per person  
Children 2 and under eat free

**A Silent Auction will take place during the supper.**

Tickets will be on sale beginning Sunday March 13 at church. Please invite your friends and family to join you for this fun time.

The Children and Youth of the church are hosting this event to raise money. The Youth will use their earnings for their Spring Retreat.